



## Introduction to SOLID

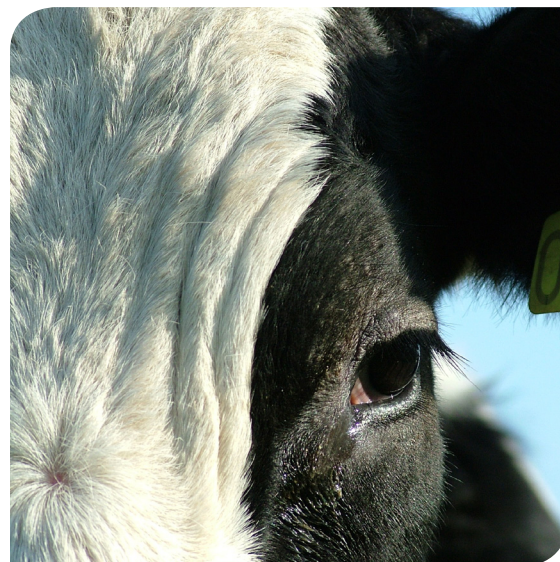
SOLID is a European project on Sustainable Organic and Low Input Dairying financed by the European Union.

## Project purpose

The project aims to improve the technical performance and economic competitiveness of organic and low-input dairy systems in Europe, while maximising their potential to deliver environmental goods and enhance biodiversity.

## Partners

A total of 25 institutes and organisations in ten different countries are included in the project which runs for five years from April 2011 and is co-ordinated by the Institute of Biological, Environmental and Rural Sciences at Aberystwyth University, UK.





**Experiments** - Work at research institutes includes experiments on

- Identifying physiological biomarkers of adaptation to low input systems
- Comparisons of breed responses to metabolic challenges typical in low input systems

Development of models for

- Decision support for optimum forage management
- Carbon sequestration in low input and organic dairy systems
- Life Cycle Analysis of dairy products

Desk-top studies on

- Potential of by-products as feed resources
- Prediction of energy requirements of cows on high forage diets

Evaluation of

- competitiveness of novel strategies
- regional impacts and policy implications

## Objectives

The SOLID project will support developments and innovations in organic and low input dairy systems to optimise competitiveness while

- maximising the potential of these systems to deliver environmental goods and biodiversity, and
- optimising economic, agronomic and nutritional advantages for the development of innovative and sustainable organic and low input dairy systems and supply chains.

## In short, SOLID will

- Actively involve stakeholders in a co-ordinated, participatory approach (organic and low input dairy farmers, farmer groups, advisors, processors)
- Quantify advantages of genotypes “adapted to organic and low input dairy production systems”
- Develop novel and sustainable feed resources and a decision support model to optimise management of on farm feed
- Develop a knowledge platform to assess environmental sustainability
- Evaluate the competitiveness of existing organic and low input dairy farms and novel strategies developed
- Disseminate knowledge to key stakeholders through a participatory framework.



## Planned on-farm studies

- Comparing the performance of different breeds of goats in commercial low input farm systems in Greece
- Testing the outcome of feeding novel forages in Romania and Spain
- Further ideas for on-farm studies will come from farmers themselves.

## Project Work Packages

Eight work packages make up the project:

1. Innovation through stakeholder engagement and participatory research
2. Adapted breeds
3. Novel feeds and decision support models
4. Develop a knowledge platform to assess environmental sustainability
5. Supply chain and consumer analysis
6. Socio-economic evaluation
7. Knowledge exchange, training and innovation
8. Management



## SOLID involves the stakeholders

A major feature of the project is the involvement of industry partners from the very beginning. As well as conventional experiments being planned and conducted at research institutes, farmers will be consulted about research needs and novel approaches.

Innovative ideas will be tested or monitored on commercial farms. In each of nine countries, researchers and farmer representatives will be working together to plan research which will be carried out on farms, covering topics relating to optimisation of feeding, animal health and product quality.

## Outcomes

The project website, [www.solidairy.eu](http://www.solidairy.eu), will keep you informed about the SOLID projects results and outcomes as they come to hand.

Results will also be presented at stakeholder meetings as well as scientific meetings throughout the life of the project.

Results from both research stations and farms will aid farmers' choices on the use of breeds and feeding strategies to maintain productivity, and improve animal health and welfare, while meeting the market requirement for high quality milk.





## SOLID partners

The project brings together a range of partners, including research institutes, farmer co-operatives, consumer organisations, advisory bodies, and private enterprises.

The SOLID project will utilize a selected group of stakeholders at European level, consisting of representatives from the dairy farmer sector, animal industry, NGO's, policy makers, and extension services, to provide advice and guidance to ensure continued relevance of research and outcomes for the duration of the SOLID project.



*There are 25 SOLID partners in 10 European countries: UK, Denmark, Austria, Italy, Belgium, Finland, Greece, Spain, Romania, Germany.*

### SOLID Facts

- Total budget: ca. 6 mill. Euros
- 5 years: 2011-2016
- 25 partners (11 enterprises)
- 10 countries

### Contact

Dr. Phillipa Nicholas: [pkn@aber.ac.uk](mailto:pkn@aber.ac.uk)

[www.solidairy.eu](http://www.solidairy.eu)

SOLID is co-ordinated by the Institute of Biological, Environmental and Rural Sciences at Aberystwyth University, UK.



This project has received funding from the European Union's Seventh Framework Programme for research, technological development and demonstration.

